

**FOR SERVICE
REFERENCE ONLY**

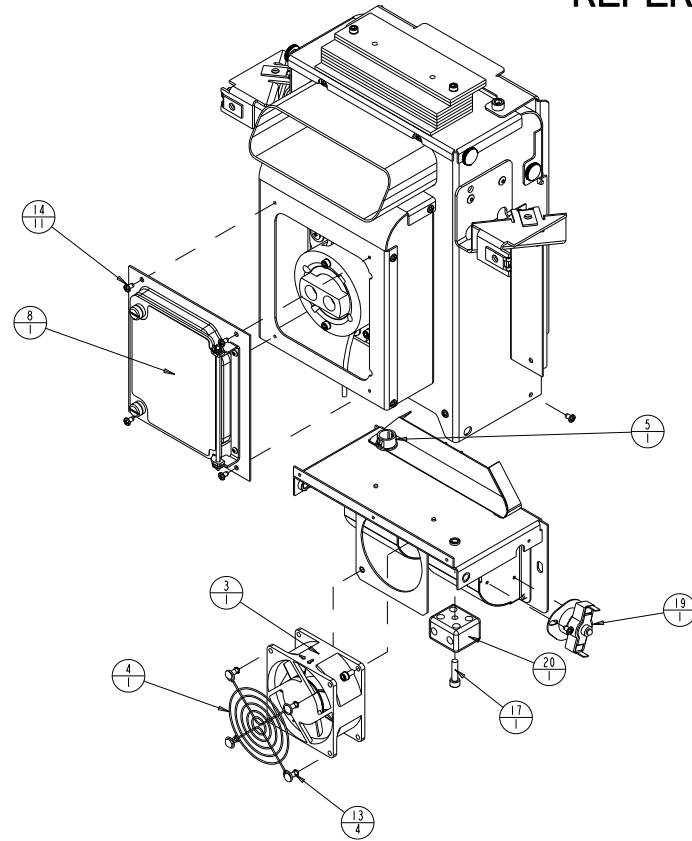
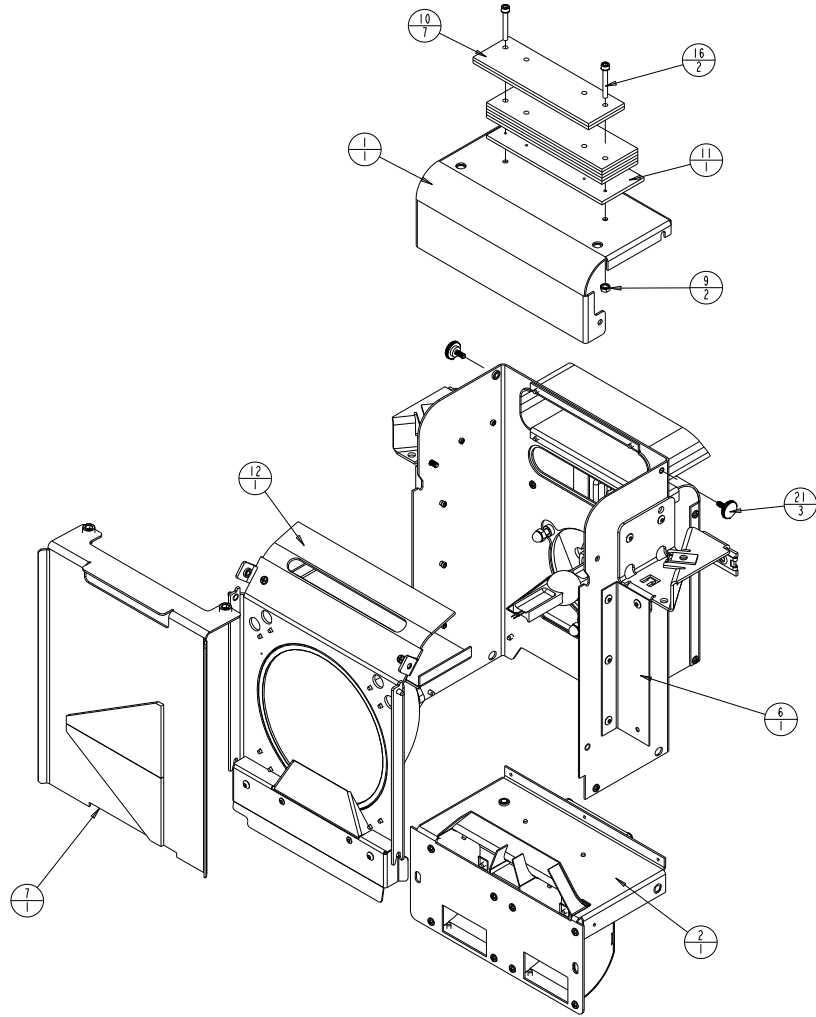
21	3	TW544	90705033	THUMBSCREW, M4, PANEL ACCESS
20	1	BLOCK_TERM2-POLE_CERAMIC	90406197EF	TERMINAL,BLOCK, 2 POLE CERAMIC, UL
19	1	TW_THERMAL_SWITCH_90TABS	90413013EF	SWITCH,THERMAL 250F 3/4" NORM CLOSED MAN
18	2	SCREWM6AC10SS	91100610	SCREW,M6 SOCKET CAP 10 SS W/PATCH
17	1	SCREWM5AC20SSP	91100520	SCREW,M5 SOCKET CAP 20 SS W/PATCH
16	2	SCREWM4AC30W-BZ	91000430	SCREW,M4 SOCKET CAP 30 BZ SEMS
15	2	SCREWM4AC08BZ	91000408	SCREW,M4 SOCKET CAP 08 BZ SEMS
14	11	SCREW6-32PP250FTYPE-BZ	90709012	SCREW,6-32 PHIL PAN 1/4 F TYPE BZ
13	4	RIVET156X460PUSH_NY	90701336	RIVET, 5/32 PUSH .217-.256 NY BL
12	1	TOA071		INTERNAL REFLECTOR, ASM, COMPLETE, SHB/SG
11	1	TW521	80070468	PLATE, BASE, COUNTERWEIGHT SG
10	7	TW522	80070469	PLATE, MID, COUNTERWEIGHT MEA1
9	2	NUTM4KEP	91201204	NUT,M4 KEPS
8	1	TOA073		INTERNAL MOUNT, ASM, LAMP ACCESS DOOR (STAMPED)
7	1	TOA074	80580044	MIRROR, HOT, ASM, PLATE, HORIZONTAL GAP
6	1	TOA041		INTERNAL HOUSING, ASM, REFLECTOR, UPPER COMPLETE, SHB
5	1	BUSHINGS00SNAP	90410102	GROMMET, SNAP BUSHING .50 ID
4	1	GRILL_80MM-FAN	99190100	GRILL, BLACK, 80MM FAN
3	1	TW703	80270038EF	FAN, ASSY, SUNON 80 X80 X38MM 74.5 CFM
2	1	TOA069		INTERNAL DUCT, INTAKE, REAR, SB/SG
1	1	TW157	80070454	COVER, HOUSING, RELECTOR SG
ITEM NO.	QTY.	FILENAME	PART NO.	DESCRIPTION

BILL OF MATERIALS

UNLESS OTHERWISE SPECIFIED	RELEASE DATE:	CE:	2105 GRACY FARMS LANE AUSTIN, TEXAS 78758 (512) 836-2242 FAX (512) 832-4128 ***** http://www.highend.com	LIGHTWAVE RESEARCH
DIMENSIONAL TOLERANCES:	ENG:	OA:		
0 PLACE DECIMAL = ±0.38	ME:	DRW:		
1 PLACE DECIMAL = ±0.25	MEG:			
2 PLACE DECIMALS = ±0.13				
ANGLES = ±0.5°				
FOR PAINTED PARTS REFER TO ENG. SPEC. MANUAL WI-0582	MATERIAL:	FINISH:		
ALL COMPONENTS, MATERIALS AND FINISHES TO BE RSHS COMPLIANT	CHARTED	NA		
MIN. DRAFT	INTERPRET DIMENSIONS PER ASME Y14.5M-1994	PART NO. INTERNAL TQA040_SVC		REV.
MIN. RADI1	THIRD ANGLE PROJECTION	DRAWING NO.		
FLATNESS	DIMENSIONS ARE IN MILLIMETERS	DO NOT SCALE		
THICKNESS		SCALE: 0.400		SHEET: 1 OF 2
VOLUME				

PROPRIETARY NOTICE:
 THIS DOCUMENT CONTAINS CONFIDENTIAL AND PROPRIETARY INFORMATION OF HIGH END SYSTEMS INC., (ALSO DBA LIGHTWAVE RESEARCH) AND IS GIVEN TO THE RECEIVER IN CONFIDENCE. THE RECEIVER ACCEPTS AND AGREES THAT, EXCEPT AS AUTHORIZED BY HIGH END SYSTEMS, THE RECEIVER WILL NOT PERMIT THE USE OF THE DOCUMENT OR ANY COPY THEREOF OR THE INFORMATION THEREIN; WILL NOT COPY OR PERMIT COPYING THE DOCUMENT; WILL NOT DISCLOSE TO OTHERS EITHER THE DOCUMENT OR THE INFORMATION THEREIN; AND WILL UPON COMPLETION OF THE NEED TO RETAIN THE DOCUMENT, OR UPON DEMAND, RETURN THE DOCUMENT WITHOUT RETAINING ANY OF THE INFORMATION CONTAINED THEREIN IN ANY FORM WHATSOEVER.

FOR SERVICE
REFERENCE ONLY



UNLESS OTHERWISE SPECIFIED		RELEASE DATE:	CE:	2105 GRACY FARMS LANE AUSTIN, TEXAS 78758 (512) 836-2242 FAX (512) 832-4128 ***** http://www.highend.com	LIGHTWAVE RESEARCH
DIMENSIONAL TOLERANCES:		ENG:	OA:		
0 PLACE DECIMAL = ±0.38		ME:	DRW:		
1 PLACE DECIMAL = ±0.25		MEG:			
2 PLACE DECIMALS = ±0.13		DESCRIPTION:		FINISH:	
ANGLES = ±0.5°		HOUSING, REFLECTOR COMPLETE, SB		NA	
FOR PAINTED PARTS REFER TO		MATERIAL:		PART NO.	
ENG. SPEC. MANUAL WI-0582		CHARTED		INTERNAL TQA040_SVC	
ALL COMPONENTS, MATERIALS AND		INTERPRET DIMENSIONS PER		DRAWING NO.	
FINISHES TO BE RSHS COMPLIANT		ASME Y14.5M-1994		TQA040_SVC	
MIN. DRAFT		THIRD ANGLE PROJECTION		REV.	
MIN. RADI		DIMENSIONS ARE IN MILLIMETERS		DO NOT SCALE	
FLATNESS		SI METRIC A1		SCALE: 0.400	
THICKNESS				SHEET: 2 OF 2	
VOLUME					

PROPRIETARY NOTICE:
 THIS DOCUMENT CONTAINS CONFIDENTIAL AND PROPRIETARY INFORMATION OF HIGH END SYSTEMS INC., (ALSO DBA LIGHTWAVE RESEARCH) AND IS GIVEN TO THE RECEIVER IN CONFIDENCE. THE RECEIVER ACCEPTS AND AGREES THAT, EXCEPT AS AUTHORIZED BY HIGH END SYSTEMS, THE RECEIVER WILL NOT PERMIT THE USE OF THE DOCUMENT OR ANY COPY THEREOF OR THE INFORMATION THEREIN, WILL NOT COPY OR PERMIT COPYING THE DOCUMENT OR THE INFORMATION THEREIN, AND WILL UPON COMPLETION OF THE NEED TO RETAIN THE DOCUMENT, OR UPON DEMAND, RETURN THE DOCUMENT WITHOUT RETAINING ANY OF THE INFORMATION CONTAINED THEREIN IN ANY FORM WHATSOEVER.